

## Annex: questionnaire

### 1. General information about the national GI association

Name Hungarian Association for Geo-Information (HUNAGI)

Address *Legal address:* HU-1123 Budapest, Alkotás u. 25  
*Visiting address:* H-1860 Budapest, Kossuth tér 11  
(at the Department of Lands and Mapping, Ministry of Agriculture and Rural Development) Room 441  
*Postal address:* c/o FVM FTF, P.O. Box 1 H-1860 Budapest 55, Hungary

Telephone +36 1 3014052

Fax: +36 1 3014691

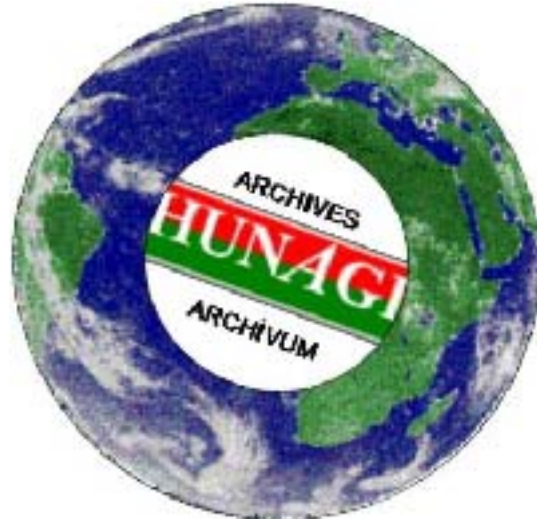
Email [re@mail.fvm.hu](mailto:re@mail.fvm.hu) (during office hours)  
[hunagi@axelero.hu](mailto:hunagi@axelero.hu) (short messages only)

Website [www.hunagi.hu](http://www.hunagi.hu)

Date of Foundation 9 November 1994

In what way is the association recognised by the government?

As national GI association, consultancy NGO partner



*When a national GI association does not exist in your country, you are kindly invited to explain the current status of GI:*

- *which are the focal points for GI;*
- *are you considering the set up of a national GI association;*
- *is it possible to give some general information about the questions below?*

### 2. Mission and objectives/strategy

Mission (describes the constitution and the reason for existence)

- 1) To promote, stimulate, encourage and support the development and use of GI and its associated technologies
- 2) To strengthen the institutional links between the multidisciplinary GI communities in Hungary and in abroad.

Objectives/strategy (describe the way the organisation will achieve its mission. It consists out of the goals set for the longer term) The objective of the Hungarian GI Association is to provide representation and visibility of the GI community's interests in the European Umbrella Organisation for Geographic Information (EUROGI), and to build up contacts with similar national GI associations. HUNAGI carries out actions related to the EUROGI membership and provides representation of its members' interest on international fora.

### 3. Key roles

Which roles fulfils your association:

1. GI policy maker **Yes**
2. Knowledge and information supplier **Yes**
3. Public relations, awareness raising and promotion of GI **Yes**
4. Program assistance and support **Yes**
5. Political interface, lobbyist **Yes**
6. Mediator, negotiator
7. Promoter of standards, certification

- 8. Facilitator for education (professional development) and training **Yes**
- 9. Research

#### 4. Actions

Actions are the short term activities of the organisation to achieve the objectives like:

##### Workshops

- 4<sup>th</sup> EC GIS Workshop (partner: DG JRC), 1998,
- 1<sup>st</sup> EU Cadastral Workshop, 2002 (partners: DG JRC, EUROGI)

##### Seminars

- PECS Seminar, September 2002 (partners: European Space Agency, Hungarian Space Research Office)

##### Conferences

- 6<sup>th</sup> GSDI Conference September 2002 (partners: GSDI Secretariat, EUROGI)

##### Projects

Participation in international projects:

- PANEL-GIS (Pan-European Link for Geographical Information), ABDS (Administrative Boundary Database Service), IST CAP3 GSDI6, GINIE
- Contribution to : OISE (Proposal), ETEmII (by invitation in Potsdam 2001, and Antwerpen 2002), ESMI (European Spatial Metadata Infrastructure (by invitation in Lisbon and Budapest), GEIX (by invitation in Budapest), OLLO, SDILA

##### Publications

Contributions to :

- Proceedings of the EU Workshop on Cadastre (published by the European Commission in August, 2002)
- Models of national GI associations in Europe (published by EUROGI)
- Panel GI Compendium A guide to GI and GIS (published by GISIG)
- Proceedings of the EC GI/GIS Workshops (Leuven, Stresa, Lyon, Budapest, Dublin)
- A strategic View of GIS research and technology development for Europe 2<sup>nd</sup> Edition (published by DG JRC), Proceedings of EUGISES Conference 2000, Proceedings of EUROGI/AFIGÉO Day “Cadastre and NSDI in Europe” Paris, April 2000, Proceedings of GIS Day 2001 Budapest (CD) and others

##### Lobbying

- April 2001: at the Expert Meeting of the Parliamentary Committee on Regional Development on the role and importance of GI infrastructure in natural disaster mitigation

##### Other actions

- HUNAGI Forum at GIS/LIS CE (1995, 1996), GIS Day (2000, 2001), support of annual GIS conferences (NGIS in Szolnok, GIS Open in Székesfehérvár, LIS in Kaposvár, Agroinformatics in Debrecen, GIS in Education in Budapest)

Can you give a brief description of actions related to each role as mentioned above?

#### 5. Structure

Board (general: deals with mission and strategy); General Board, meeting takes place annually. Approves reports on operation, finance and monitoring, as well as strategy updates, action plan, financial plan. Special in 2002: expected feedback for extended SWOT analysis on efficiency and effectivity.

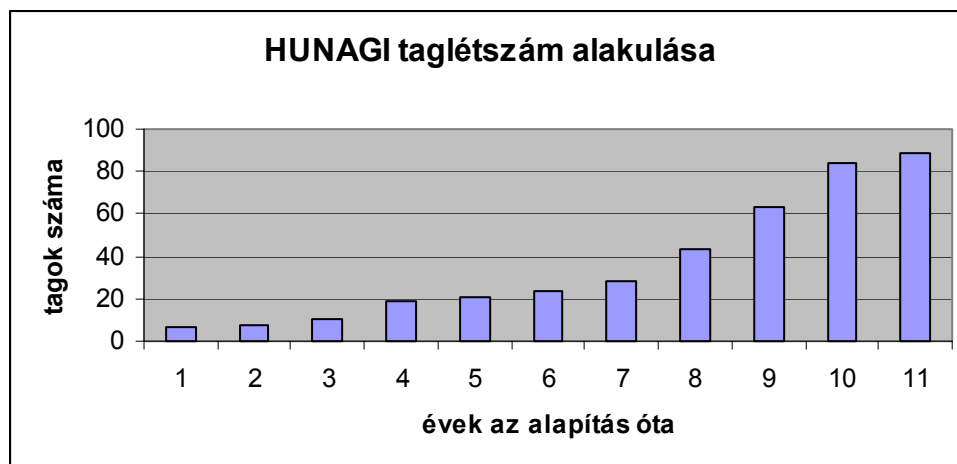
Board (executive: deals with day to day business and short term actions); Presidential Executive Board operates on continuous basis. Formal meetings take place at least once per calendar year. Decides on strategy updates, membership policy, applications and matters as regulated by the Statute, which was updated and accepted by Court decision in August 2002.

Working groups (standing committees); No permanent committees. Topic-oriented ad hoc task force groups are established when needed

Secretariat (employees, volunteers, task); Runs by the Secretary General supported by the Treasurer (both on voluntary basis). Tasks includes elaboration membership policy development and direct membership contacts, administration and archive, information gathering, evaluation and dissemination, co-operation development, co-ordination and awareness raising. Keeps contact with EUROGI and partner national GI associations. Provides tasks related to the EUROGI Executive Board membership and EUROGI Treasury function. Contact with the subcontracted bookkeeping agency. Preparing plans, documents, keeps records on activities including photo archive and provides webpage development with voluntary assistance of members (FOMI, WebHU and Autodesk Hungary). A 3-member Control Committee, elected by the General Assembly keeps control on the overall operation.

Membership:

- categories and number in each category, target groups; Members (inclusive sustaining members, all legal entities) 63 (as of 16 November 2002), Invited observers. Planned: Student Circle



Sectors: Governmental (25%), Academia (21%), NGOs (20%) and Private Sector (34%).

7	8	10
94	95	96

Which are the benefits (promised and received) for the members, related to each category; Forum for representing their interest, dissemination of GI related information essential for the preparation of the EU accession and strengthen the competitiveness

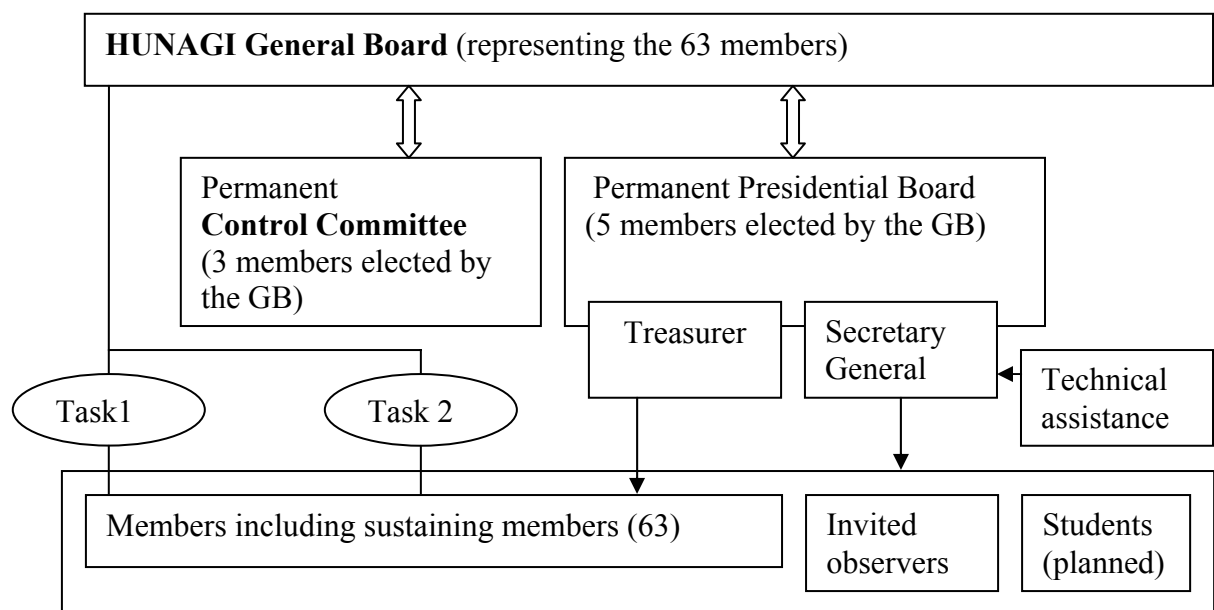
Is the membership separated in a public and private part and how are they brought together;

The only difference is, private sector enterprises are belonging in the sustaining member category contributing to the activities and operations by higher membership fee. Common interest: developing potentials for public-private partnership

Partnerships (whether associations work in partnership with other organisations to deliver its mission and objectives)

HUNAGI has 8 years long strong partnership with HUNGIS Foundation, which was established 11 years ago for the development of the GIS culture in Hungary. HUNAGI has seat in the Board of Curators of HUNGIS, the prime consultant body for the government in GIS.

Does an organisational scheme for the organisation exist? If yes, please draw.



## 6. Resources

Income:

- Dues for each type of membership

Government/Academia/NGOs. 14,000 HUF

Budget based organisation having regular incomes: 35,000 HUF

Enterprises (sustaining member category): min 50,000 HUF

Large area based territorial organisations/public benefit companies 100,000 HUF

In very few cases memberships are based on special agreement (mutual zero membership)

1 Euro is about 240 HUF

- funding in kind/secondment

In-kind support is given by the Department of Lands and Mapping of the Ministry of Agriculture and Rural Development providing partial infrastructure for the secretariat . National Programme for the Adoption for the Acquis Communautaire in Lands and Mapping (1999- 2003) framework partner.

- Sponsorship
- other donations

Ministry of Education, Under State Secretariat for Research and Development (in competition environment)

Technical assistance provided by FÖMI, WebHU and Autodesk Ltd on continuous basis.

Expenses:

- Running costs for the secretariat

1,285,185 HUF as of 16 November 2002

Expected figure at by the end of the year: about 2,000,000 HUF

(notebook and sw upgrade)

1 Euro is about 240 HUF

- other costs

EUROGI membership fee (50-50% shared by MoE R+D Under State Secretariat and by FÖMI in MoARD NPAA framework)

Related to the GSDI6 Conference (final figures t.b.c.)

Related to INSPIRE (costs are partially reimbursed by the European Commission)

## 7. Communication

Newsletters YES using e-mail

Bulletins YES (periodic)

Reports

Website YES ([www.hunagi.hu](http://www.hunagi.hu))

Magazines Regular publications in leading domestic and sometimes in international GIS journals

Electronic mail with hyperlinks YES

Dr.Gabor Remetey-Fülöpp  
Budapest, November 18, 2002