



REGIONAL LEVEL NETWORKING IN EUROPE:

IMPETUS FOR BETTER NSDI IMPLEMENTATION - THE CASE OF EUROGI AND HUNGARY

Presented by: **Gábor Remetey-Fülöpp**

Secretary General, Hungarian Association of Geo-Information (HUNAGI)

(mailing) 1860 Budapest 55 POBox 1, (visiting) Budapest V. Kossuth tér 11, Hungary

Tel: +36 1 301 4052 / Fax: +36 1 301 4719, Email: hunagi@hunagi.hu, URL: www.hunagi.hu

Co-Author: **Bino Marchesini**

Secretary General, EUROpean umbrella organisation for Geographic Information (EUROGI)

(mailing) P.O. Box 9046, NL-7300 BA Apeldoorn, (visiting) Hofstraat 110, 7311 KZ Apeldoorn, The Netherlands

Tel: +31 55 528 5532 / Fax: +31 55 528 5032, Email: eurogi@euronet.nl, URL: www.eurogi.org



CONTENTS

PART ONE

- **GI NETWORKING IN EUROPE**
- **EUROGI AS POLICY INFLUENCER**
- **EUROGI STRUCTURE & ACTIVITIES**
- **HOT TOPICS IN THE EUROPEAN CONTEXT**

PART TWO

- **THE HUNGARIAN GI ASSOCIATION HUNAGI**
- **HUNAGI INVOLVEMENT IN THE INTERNATIONAL ACTIVITIES**
 - EUROPEAN UNION**
 - REGIONAL**
 - GLOBAL**
- **HOT TOPICS IN HUNGARY**
 - INSTITUTION BUILDING (EU-ACQUIS)**
 - RURAL DEVELOPMENT**
 - NSDI**
- **REFERENCES, ACKNOWLEDGEMENTS**



GI NETWORKING IN EUROPE

WHAT EUROGI IS

Founded in 1993 on initiative of EC
Membership of EUROGI has grown by 50 % to 23
Members NGIAs from EU, EFTA Pan European
organisations
Collectively EUROGI represents more than 6500
public and private sector organisations

FOCUS ON

- policy and representation of the members in its broadest sense
- its members in the whole of Europe
- Lobbying
- Newsletter
- Website



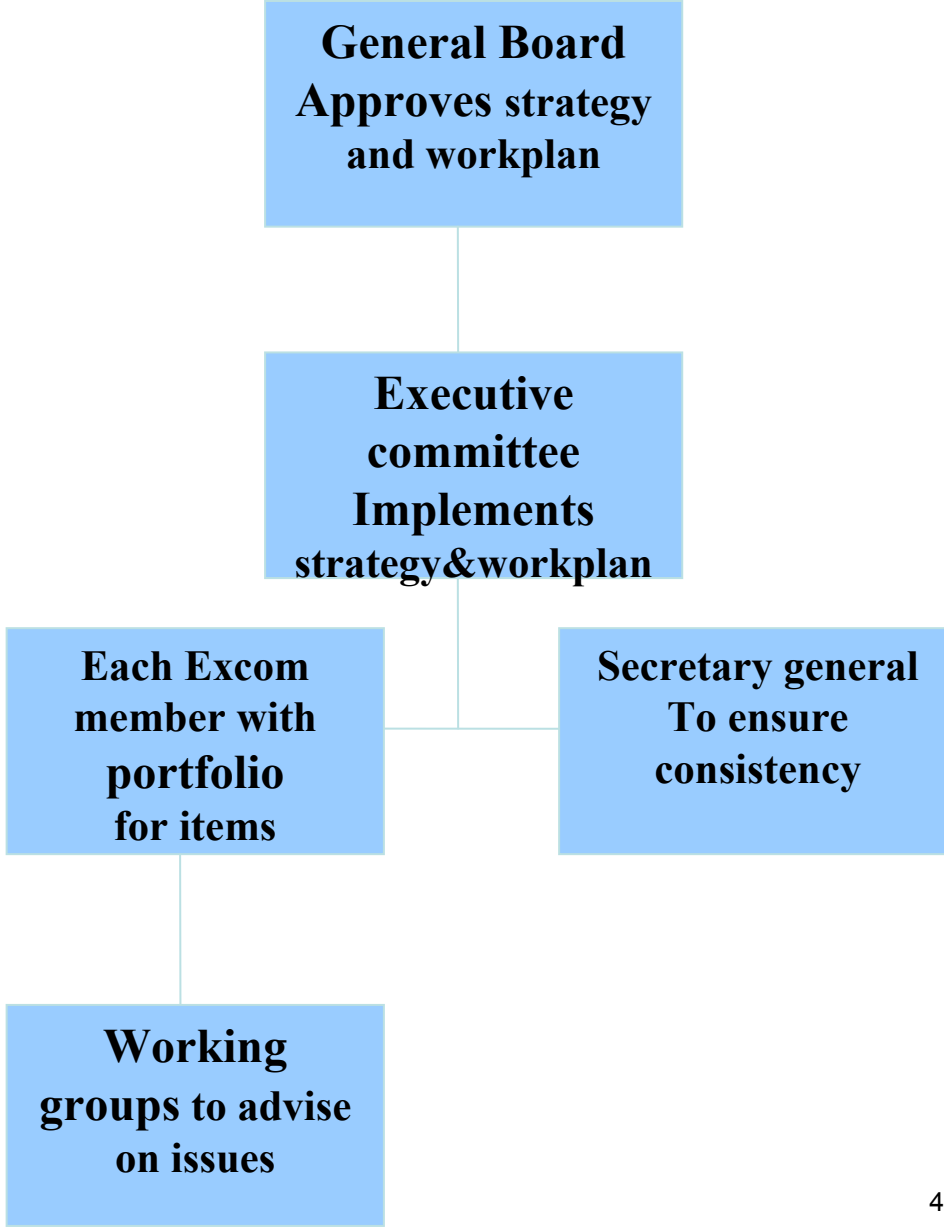
EUROGI BASICS & STRUCTURE

STATUS

Independent
NGO
with
President, General Board,
ExCom, WG activities
serviced by secretariat
currently based in
Apeldoorn, NL

VISION

geographic information
with all its aspects
should become a fully
integrated component
of the European
knowledge-based
society





EUROGI AS POLICY INFLUENCE

MISSION

To maximise the availability and effective use of GI in Europe for good governance, economic and social development, and informed public participation

To stimulate, encourage and support the development and use of geographic information and technology

OBJECTIVES

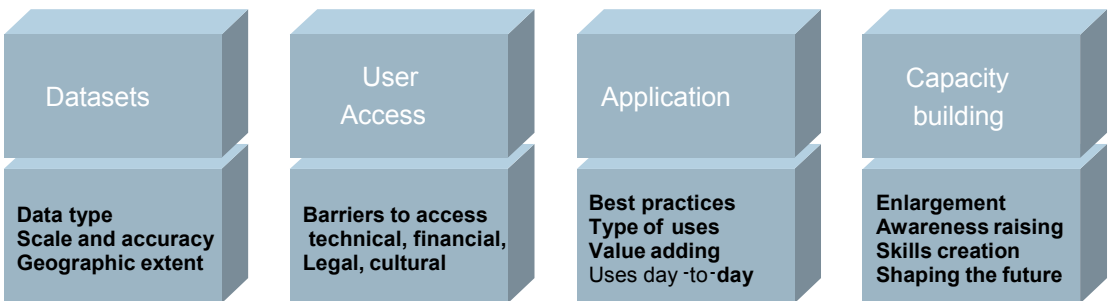
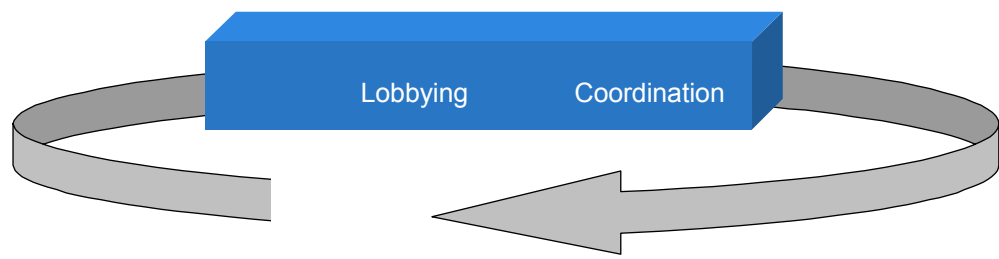
Datasets and services: promote compatibility, sharing and re-use of geo-spatial data

User access: promote easy access to datasets by users

Promote applications for day-to-day use

To build the necessary technological, political, and human capacity at all levels

Communicate about the objectives, high level and network lobbying to achieve the objectives





EUROGI ACTIVITIES

EUROGI NETWORKING FOCUS ON

Policy and representation of the
members in its broadest sense
its members in the whole of Europe

Lobbying

Newsletter

Website

Global debate by membership of
GSDI-organisation

Strengthen relations with other Pan
European organisations (e.g
MoU's, Network)

Update reports National GI

Associations, Pan European GI
Organisations, Key-players in
Europe, Cadastral GIS in Europe

Build up further the case-study-
engine Webcastle

HOW

Policy contribution to
initiatives in the GI world

Support of production
and acceptance of
Directives and by

Monitoring the
implementation and
giving feed-back



HOT TOPICS IN THE EUROPEAN CONTEXT

GINIE (GI NETWORK IN IN EUROPE)

based on EUROGI Consultation paper of 2001

Partners EUROGI, JRC, OGC-E, Univ. Sheffield

More than 150 experts from 32 countries involved

wealth of material, see: www.ec-gis.org/ginie

FINDINGS

GI developments need to be seen in a wider policy context

GI has a major role to play in addressing societal demands
and exploiting the opportunities opened up by policy and
technology

GI has economic value in its own right as a major component
of PSI, basis for the development of new markets and jobs
in the value-adding and location based industries

GI is not just about having a lot of data

It is about developing a strategic infrastructure to underpin the
development of the Information Society and the
Knowledge Economy: an SDI



HOT TOPICS IN THE EUROPEAN CONTEX



1st EU-Day, INTERGEO®
Stuttgart, 14. Oct. 2004

Programme: „GEOINFORMATION – THE EUROPEAN BUSINESS DIMENSION“

Moderation: Wolfgang Steinborn & Bino Marchesini

| | | |
|-------|---|---|
| 09.30 | Reception of guests; visit of selected European stands | High-level EU representative with delegation |
| 10.00 | Inauguration – Welcome | Presidents Jean POULIT of EUROGI, Joachim WAECHTER of DDGI and Hagen GRAEFF of DWV |
| 10.15 | The European dimension of Geo-Information | High-level EU representative, BRUSSELS |
| 10.45 | The economic importance of GI – lessons learnt from recent studies and political measures | Jan LAAN, Director of ROM Rijnmond, President of R ROTTERDAM |
| 11.05 | Data availability and interoperability | Alain DE TAEYE, CEO, Teletlas, GHENT |
| 11.25 | GI-based services for the citizen | Michael NICHOLSON, Managing Director, Intelligent Addressing Ltd., LONDON |
| 11.45 | GI for the implementation of European policies | Dominique CAILLAUD, Member of the French Parliament, President of AFIGEO, PARIS |
| 12.05 | Successful cross-border cooperation - examples from the Saar-Lor-Lux region | Michel WOLTER, Minister of the Interior, LUXEMBOURG & Hans BOHNENBLUST, Member of Board, Ernst Basler + Partner AG, ZOLLIKON / CH |
| 12.25 | Use and expectations within the EU enlargement process | Szabolcs MIHÁLY, Director General, FÖMI, BUDAPEST |
| 12.45 | Software – the American challenge | Walter MAYER, CEO, PROGIS GmbH, VILLACH / A |
| 13.05 | Geodata integration – business case and future markets | Rupert HAYDN, CEO, GAF-AG, MUNICH |
| 13.25 | Business lunch – discussion of conclusions | High-level EU representative DWV, DDGI, EUROGI, sponsor, speakers, state government representatives (special invitation) |

EUROGI MEMBER MEETING
INTRODUCING THE HOT ISSUES IN
THE MEMBER COUNTRIES
AROUND PSI, INSPIRE, GALILEO AND
GMES

INTERGEO EU-DAY
GI and the INFORMATION SOCIETY
WEBCASTLE ON CASE
APPLICATIONS

EXAMPLES

Case study

Identification
The Duna-Dráva National Park National Plan

Description
The parliament resolution 20700. (XV. 01.) launched the planning project in the region. The Republic of Hungary and the Republic of Croatia established the joint National Park of Duna-Dráva along the Drava between the Danube and the Drava rivers. According to this work the area is to be designated as 123 biotopes located on the territory of national park.

Language(s)
English

Character set(s)
isoACR

Process of production
The goal of presentation is the protection of the river Duna and Drava and their tributary system and the natural values within both rivers, riparian and other resources of the concerned areas.

WWW address(es)

Content (temporal, spatial)
Geographical context: Hungary

Temporal context description
Date of case study creation: 1994

Classification
Data, assessment, identification

Keywords
Planning, Parks, Land-use, Rivers, Environment, Legislation

Metadata of metadata
Date of the metadata update: 12 November 2003
Metadata language: English
Metadata character set(s): isoACR
Metadata content type: Persons, Catalogs (Labels), Organizations, Not specified

Metadata production context
University of Debrecen, Department of Landscape Planning - Dr. Csere of second object

Related resources
Catalog: Dr. Mészáros contact of: Author of second object
Label: Dr. Mészáros contact of: Author of second object

Related case studies
No records

Related documents
No records

Logged user: guest, Mozilla/5.0; CN=

Case Study

Study book + CD-ROM + Internet

DUNA-DRÁVA
NATIONAL PARK OF HUNGARY AND CROATIA

Internet

GIS database about natural, cultural heritage of national park

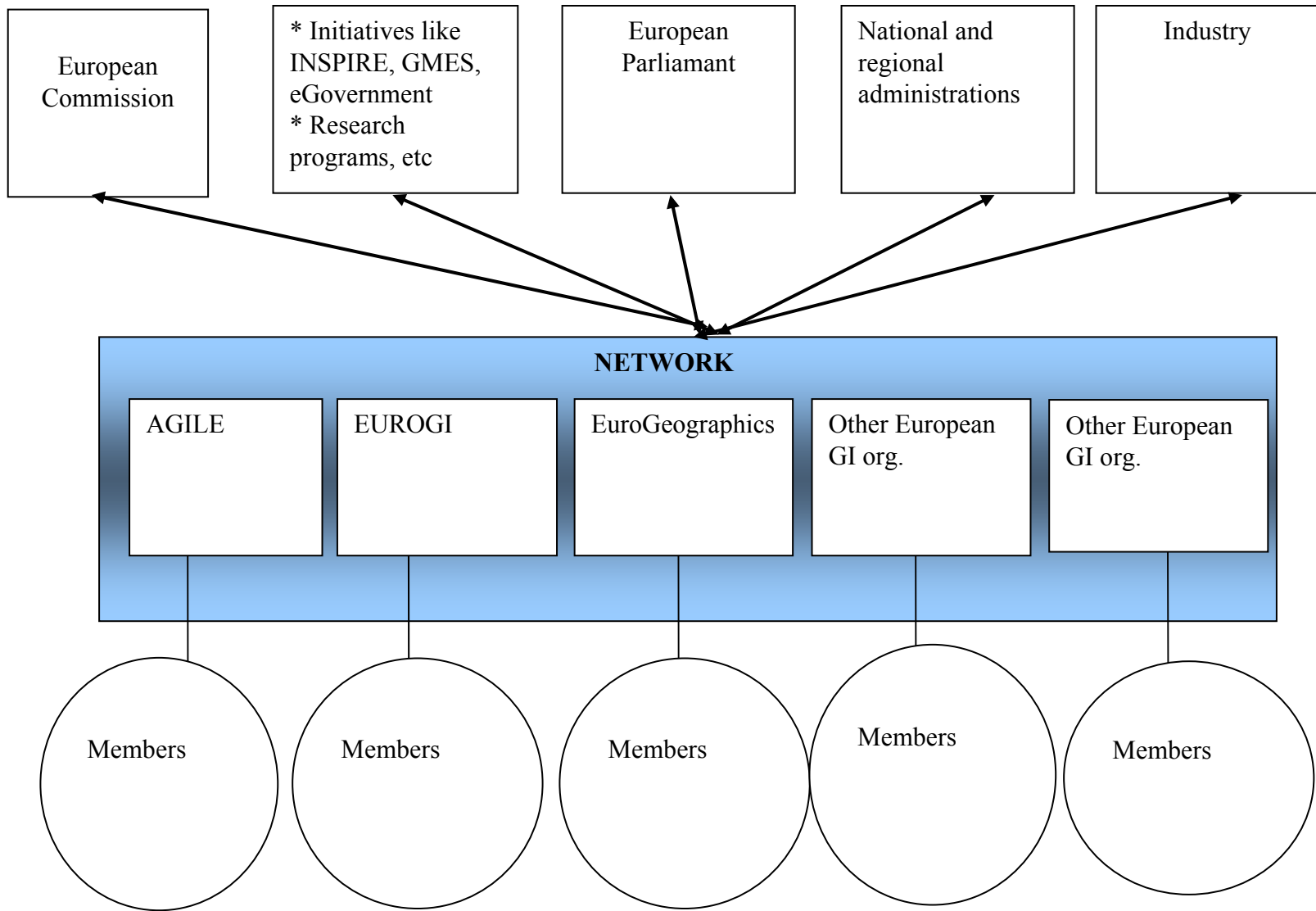
Zonation regulations

www.eurogi.org



EUROGI FACILITATES NETWORKING
The EUROPEAN GI NETWORK - EGIN

HOT TOPICS IN THE EUROPEAN CONTEX





HUNAGI - THE HUNGARIAN GI ASSOCIATION

HISTORY

FORMED IN 1994 BY 10 NGOs

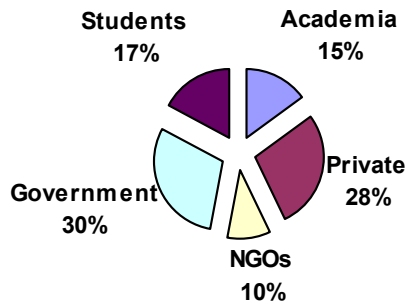
MISSION GOALS

SERVING AND REPRESENTING THE GI COMMUNITY

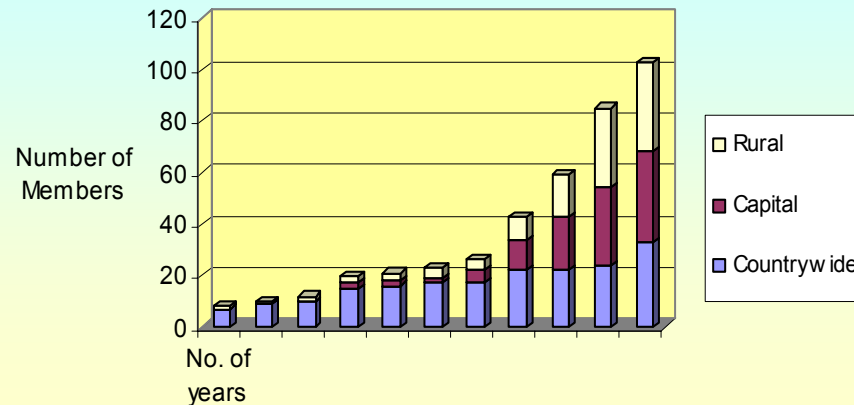
TODAY

101 MEMBER INSTITUTIONS

Breakdown of HUNAGI Membership by Sectors



Breakdown of HUNAGI Membership by geographical location



FEATURES

- INTERDISCIPLINARITY
- INTERSECTORITY
- INTERNET BASED
- NETWORKING
- LINKING STAKEHOLDER AND OTHER PLAYERS
- HEAVY INTERNATIONAL



HUNAGI INVOLVEMENT IN THE EU ACTIVITIES

PROJECTS INCLUDE

**COMPARATIVE STUDIES ON NGIAs, ESMI, CORINE, MERA, ABDS, TAMA, TALC
CORINE2000 OLLO, LIME, PRONET, EUGISES, SDILA Well-GIS, Panel-GIS,
Nature- GIS,**

| Year | Venue | Topic | HUNAGI presentations | Hungarian players |
|-------------|--------------|--|---|--------------------------|
| 1995 | Brussels | | - | |
| 1996 | Genoa | | Papers on ongoing projects | FÖMI, HUNAGI |
| 1997 | Leuven | | Papers on ongoing projects | FÖMI, HUNAGI |
| 1998 | Budapest | | Host organiser, Papers on developments and results | Many |
| 1999 | Stresa | | Paper on the CAP preparation | MoARD, FÖMI |
| 2000 | Lyon | | Paper on the Panel-GI | GISIG, FÖMI, |
| 2001 | Potsdam | European GI Infrastructure: managing the mosaics | Paper on | FÖMI, HUNAGI |
| 2002 | Dublin | European Spatial Data Infrastructure (ESDI): working in progress | Joint paper with JRC-EUROGI-HUNAGI on the Cadastral Workshop Poster on the IT development of the Land Office Network | HUNAGI, T-Systems |
| 2003 | A Coruna | ESDI: serving the user | Paper on the Web-based service of the Central European Land Knowledge Center | CelkCenter |
| 2004 | Warsaw | ESDI: State of the art | Paper on CelkCenter, Poster on advanced state boundary mapping service | HUNAGI FÖMI |



HUNAGI INVOLVEMENT IN THE EUROGI ACTIVITIES

REGIONAL - EUROPE

- **1ST EC WORKSHOP ON CADASTRE AS FUNDAMENT OF THE SDI**
- **OVERALL SURVEY ON CADASTRAL GIS IN EUROPE**

| Year | Venue | Event | HUNAGI participation and presentations |
|-------------|--------------|---------------------------|--|
| 1994 | Luxembourg | General Board Meeting | Observer, taking part in discussions |
| 1995 | Luxembourg | General Board Meeting | Elected as member, taking part in discussions |
| 1996 | Luxembourg | General Board Meeting | Full members status, taking part in discussions |
| 1997 | Luxembourg | General Board Meeting | Taking part in discussions |
| 1998 | Luxembourg | General Board Meeting | Taking part in discussions, elected into the ExCom |
| 1999 | Luxembourg | Assembly and Members' Day | Taking part in discussions |
| 2000 | Luxembourg | Assembly and Members' Day | Hot issues in Hungary: flood mapping |
| 2001 | Luxembourg | Assembly and Members' Day | Presentation on the GSDI 6 preparation |
| 2002 | Luxembourg | Assembly and Members' Day | |
| 2003 | Brussels | Assembly and Members' Day | Paper on the Web-based service of the Central European Land Knowledge Center |
| 2004 | Brussels | Assembly and Members' Day | Introduction of the Permanent Committee on Cadastre in the European Union |



HUNAGI INVOLVEMENT IN THE GSDI ACTIVITIES

NSDI INITIATIVE, GSDI ASSOCIATION

ACTIVE PARTICIPATION IN GSDI CONFERENCES, ADVISORY COMM & BOARD

| Year | Venue | Topic | HUNAGI participation |
|------|--------------------------|-----------------------------|--|
| 1996 | Bonn-Königswinter | Germany, Europe | Taking part in the discussion, representing also ISPRS Comm. VII |
| 1997 | Chapel-Hill | NC, USA, North America | Taking part in the discussion |
| 1998 | Canberra | Australia | Introductory presentation on the Hungarian NSDI |
| 1999 | Cambridge | United Kingdom | Advisory Committee meeting participation |
| 1999 | Cape Town | South Africa | HUNAGI was represented by its President, staff member of PMO |
| 2001 | Cartagena | Colombia, South America | Introductory presentation on the venue of the GSDI 6 Conference |
| 2002 | Budapest | Hungary, Europe | Presentations include the Crop Monitoring, Nationwide Orthophoto Program, the Corine Land Cover project and activities of HUNAGI |
| 2003 | Cambridge | United Kingdom | Advisory Committee meeting participation |
| 2004 | Bangalore | India, Asia | Introduction of the EUROGI Cadastral Survey in Europe |
| 2005 | <i>Santiago de Chile</i> | <i>Chile, South America</i> | Introduction of EUROGI-HUNAGI synergy in the building of NSDI |



HUNAGI INVOLVEMENT IN OTHER INT'L ACTIVITIES

REGIONAL & GLOBAL

FIG

COMMISSION 7 CADASTRE (2006-2010)

COMMISSION 3 SPATIAL INFORMATION MANAGEMENT (2006-2010)

ISPRS

COMMISSION VII RESOURCES AND ENVIRONMENTAL MONITORING (HOSTING 1996-2000)

WG VII/4 HUMAN SETTLEMENTS AND IMPACT ANALYSIS (HOSTING 2000-2004)

WG IV/1 SPATIAL DATA INFRASTRUCTURE (2004-2008)

UNECE WPLA (HOSTING WORKSHOPS: 1999, 2005 APRIL)

THE WORLD BANK (CENTER OF EXCELLENCE IN PROPERTY RIGHT AND LAND MARKET DEVELOPMENT: CELK CENTER)

FAO SEUR

LAND CONSOLIDATION, LAND TENURE AND RURAL DEVELOPMENT

ICA etc



HOT TOPICS IN HUNGARY – INSTITUTIONAL BUILDING

RECENT FEATURES INCLUDE

CAP: COMMON AGRICULTURAL POLICY (LPIS, CwRS, VINGIS, CROPMON)

LUCAS: LAND USE STATISTICS

CORINE: EUROPEAN LAND COVER (1990, 2000, +CLC50)

WATER FRAMEWORK DIRECTIVE

ENVIRONMENT, NATURE CONSERVATION (NAT PARCS, VAHAVA)

NATURE GIS: A EUROPEAN *IST* PROJECT

INSPIRE: PREPARATORY PHASE ACTION PARTICIPATION

GMES: GLOBAL MONITORING OF ENVIRONMENT AND SECURITY

GALILEO: SATELLITE NAVIGATION GROUND SEGMENT INFRASTRUCTURE

**PSI: USE AND RE-USE PUBLIC SECTOR INFORMATION, PROTECTION OF
PRIVACY, FREEDOM OF INFORMATION**



HOT TOPICS IN HUNGARY – INSTITUTIONAL BUILDING

PLANNING THE FUTURE INCLUDE:

- **INSPIRE DIRECTIVE 2007-2013**
EUROPEAN SPATIAL DATA INFRASTRUCTURE
AVAILABILITY, ACCESS TO AND USE OF ANNEX 1-3 DATA
- **RURAL DEVELOPMENT PLAN 2007-2013**

COMPETITIVENESS

OPTIMISE AGRICULTURAL STRUCTURE BY
LAND REORGANISATION & LAND CONSOLIDATION

IMPROVED SUSTAINABLE LAND MANAGEMENT

LAND TENURE POLICY (HU-NL)
COMMON VOICE OF COMMON INTEREST
UNECE WPLA, FAO SEUR, CELK CENTER



HOT TOPICS IN HUNGARY – NATIONAL SPATIAL DATA INFRASTRUCTURE

BACKGROUNDS

GOVERNMENTAL BOARD DECISION ON THE SDI CORE DATA SETS PROGRAMMES AND PROJECTS STARTED (1997)

MANDATE

**INTERSECTORIAL COMMITTEE ON INFORMATION SOCIETY
TASK FORCE ON NSDI STRATEGY AND SUBCOMMITTEE ON
SATELLITE NAVIGATION (2004)**

RECENT DEVELOPMENTS

- **NSDI STRATEGY (GOALS, PARTICIPANTS, METHOD, ACTION PLAN)**
- **14TH NATIONAL GIS CONFERENCE (SEPTEMBER 2004)**
- **NOVEMBER 2004 – INTERNATIONAL FORUM (www.hunagi.hu)**



AGRICULTURE - EU CAP IACS IMPLEMENTATION IN HUNGARY

HUNGARY BASIC FEATURES of HU + LPIS

- Country area: 9 300 000 ha**
- Arable area: 4 499 800 ha**
- Total utilised agricultural area: 5 853 900 ha (63%)**
- Permanent pasture: 1 051 200 ha**
- Vineyards+orchards: 190 300 ha Forest: 1 771 700 ha**
- Base area (eligible under arable crop scheme): 3 487 792 ha**
- Expected no. of area based applications: 200 000-250 000**
- No. of agricultural parcels: 2-3 million**
- No. of physical blocks in LPIS-Hu: ~300 000**
- Average size of physical blocks (covering the full country): 32 ha**



Capital - Budapest
 7 Regions
 19 Counties
 150 (208) Small regions
 3356 Settlements





BUILDING ELEMENTS OF LPIS IN HUNGARY

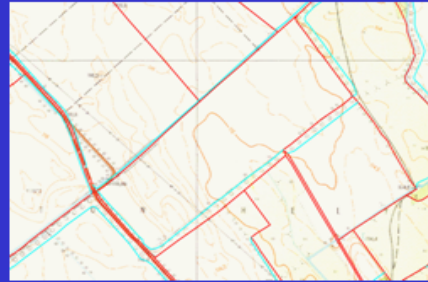
Data sources of LPIS creation



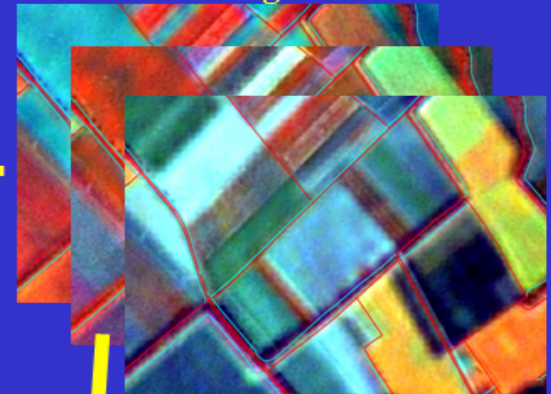
2000. / (2003) year orthophoto



Topographic map

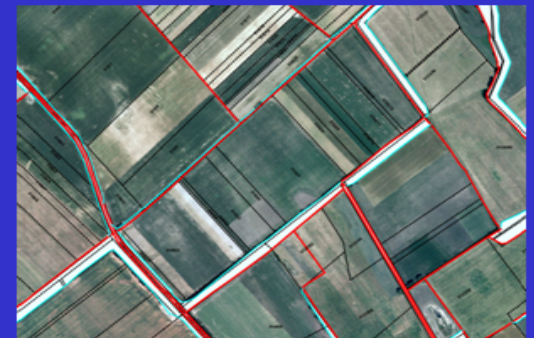


Multiannual satellite image series



1. **Ortho-photography** - geographical base
2. **topographic maps** - help in defining stable elements in time
3. **satellite imagery (multiannual)** - checking of block land use + and permanent boundaries
4. **Cadastral maps** - as an overlay on ortho-photo based block maps

Integration of aerial and satellite data



The main attributes/feature of the blocks

LPIIS: ortho-photo based physical blocks

- Block:
- unique ID number
- digital boundary in GIS, with annual update
- area (geographical, net)
- type of dominant land use category
- eligible and non-eligible areas and categories
- blocks cover the entire area of HU





HOT TOPICS IN HUNGARY – NATIONAL SPATIAL DATA INFRASTRUCTURE

THE INVOLVEMENT OF HUNAGI?

INITIATE AND MANDATE TO LEAD A TASK FORCE ON NSDI STRATEGY

ANY SHADOW INSPIRE COORDINATING COMMITTEE?

NOT YET BUT PLANNED AS A RESULT OF THE TASK FORCE

WHICH GOVERNMENT MINISTRY IS LEADING ON INSPIRE?

MoENVIRONMENT AND WATER (ENVI), MoARD (GIS)

WHICH IS THE MOST CHALLENGING ISSUE OF INSPIRE?

CORE DATA AVAILABILITY, STRATEGY AND COORDINATION

ON WHICH TOPICS OF INSPIRE SHOULD EUROGI CONCENTRATE?

SPECIFICATIONS, NETWORKING, AWARENESS RAISING

EXPECTED SUPPORT FROM EUROGI FOR DOING INSPIRE ACTIVITY?

**STRENGTHENING COHESION BETWEEN INTERNATIONAL,
INTERDISCIPLINARY COMMUNITIES, LOBBYING, AWARENESS RAISING**



REFERENCES, ACKNOWLEDGEMENT

EUROGI

Jean, Poulit, Karen Levoleger www.eurogi.org

HUNAGI www.hunagi.hu

Illustrative examples were provided by the courtesy of

- **NAT'L CADASTRAL PROGRAM:** S.Simon, S.Tóth www.nkp-kht.hu
- **CORE DATA, PRODUCTS AND SERVICES:** Sz.Mihály, P.Winkler, G.Csornai (all FÖMI) www.fomi.hu
- **GSNN/GALILEO:** I.Fejes, T.Borza (FÖMI) www.gpsnet.hu
- **REGIONAL NETWORKING:** M.Pósfai (Celk) www.celk.org

THANK YOU FOR YOUR KIND ATTENTION!